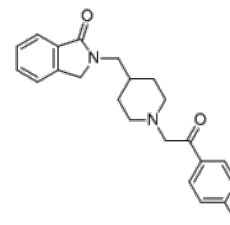


Product Name : MIN-101
Cat. No. : PC-61105
CAS No. : 359625-79-9
Molecular Formula : C₂₂H₂₃F₂N₂O₂
Molecular Weight : 366.429
Target : Sigma Receptor
Solubility : 10 mM in DMSO



Biological Activity

MIN-101 (Roluperidone, CYR-101, MT-210) is a highly potent **5-HT_{2A}** and **sigma 2 receptor** antagonist with K_i of 7.53 nM and 8.19 nM respectively.

MIN-101 (Roluperidone, CYR-101, MT-210) shows with no direct dopamine affinities, for treatment of negative symptoms in schizophrenia.

References

Davidson M, et al. *Am J Psychiatry*. 2017 Dec 1;174(12):1195-1202.

Caution: Product has not been fully validated for medical applications. Lab Use Only!

E-mail: tech@probechem.com